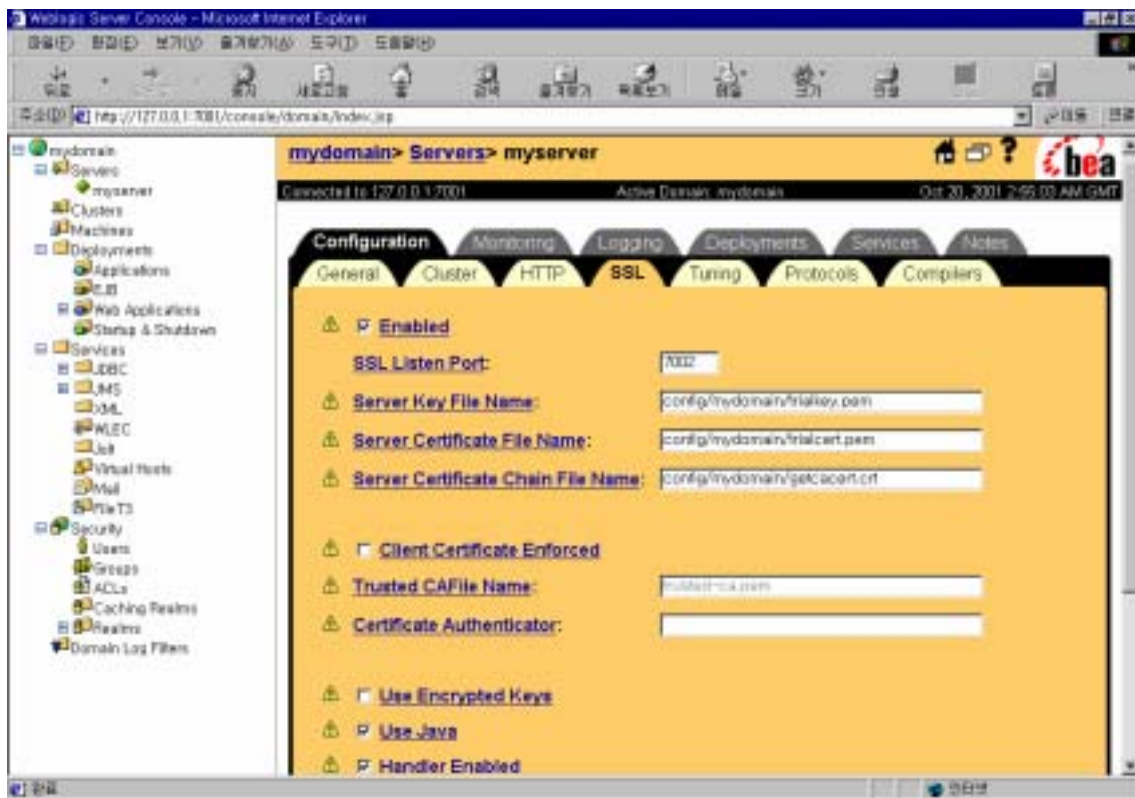


## WebLogic Server 6.0

1. (-----BEGIN CERTIFICATE-----  
CERTIFICATE----- ) Weblogic server ( \wlserver6.0 \ config \  
mydomain)

- .pem  
“trialcert.pem”

2. Administration Console Server Configuration SSL tab  
key file, certificate file, certificate chain file  
Apply



3. restart <https://hostname:7002>

) <https://angella:7002>

