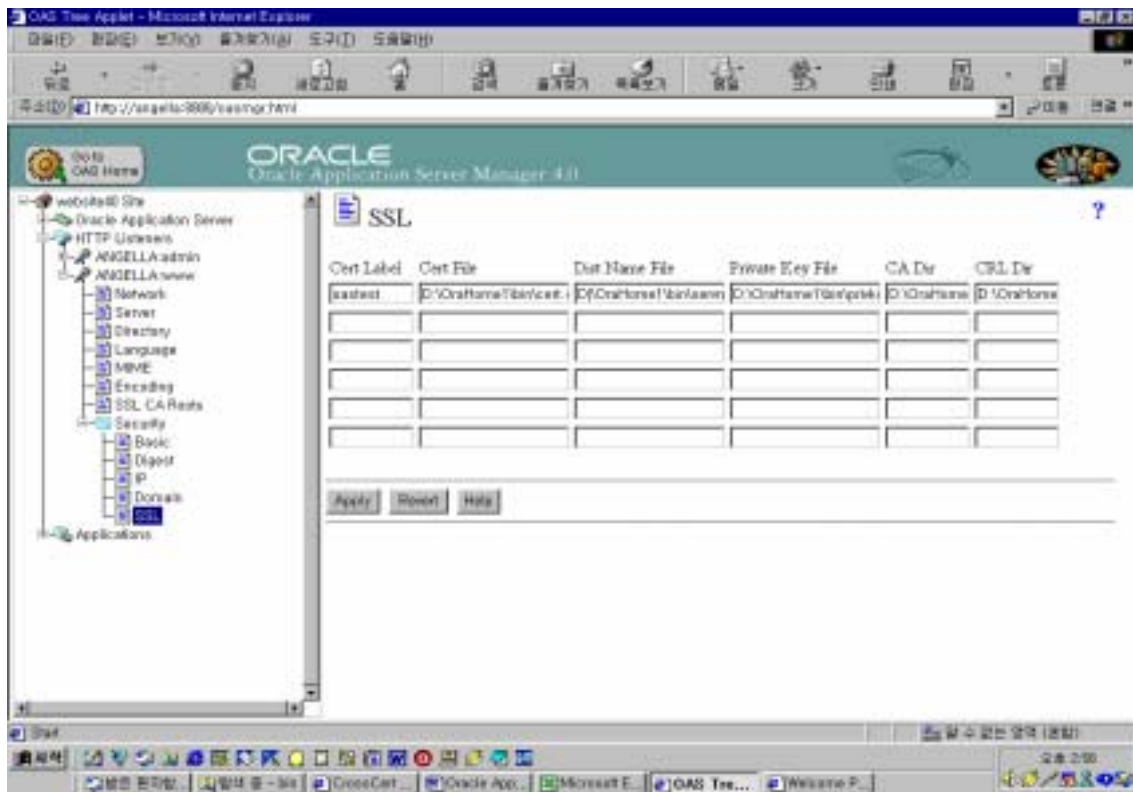


Oracle Application Server 4.0

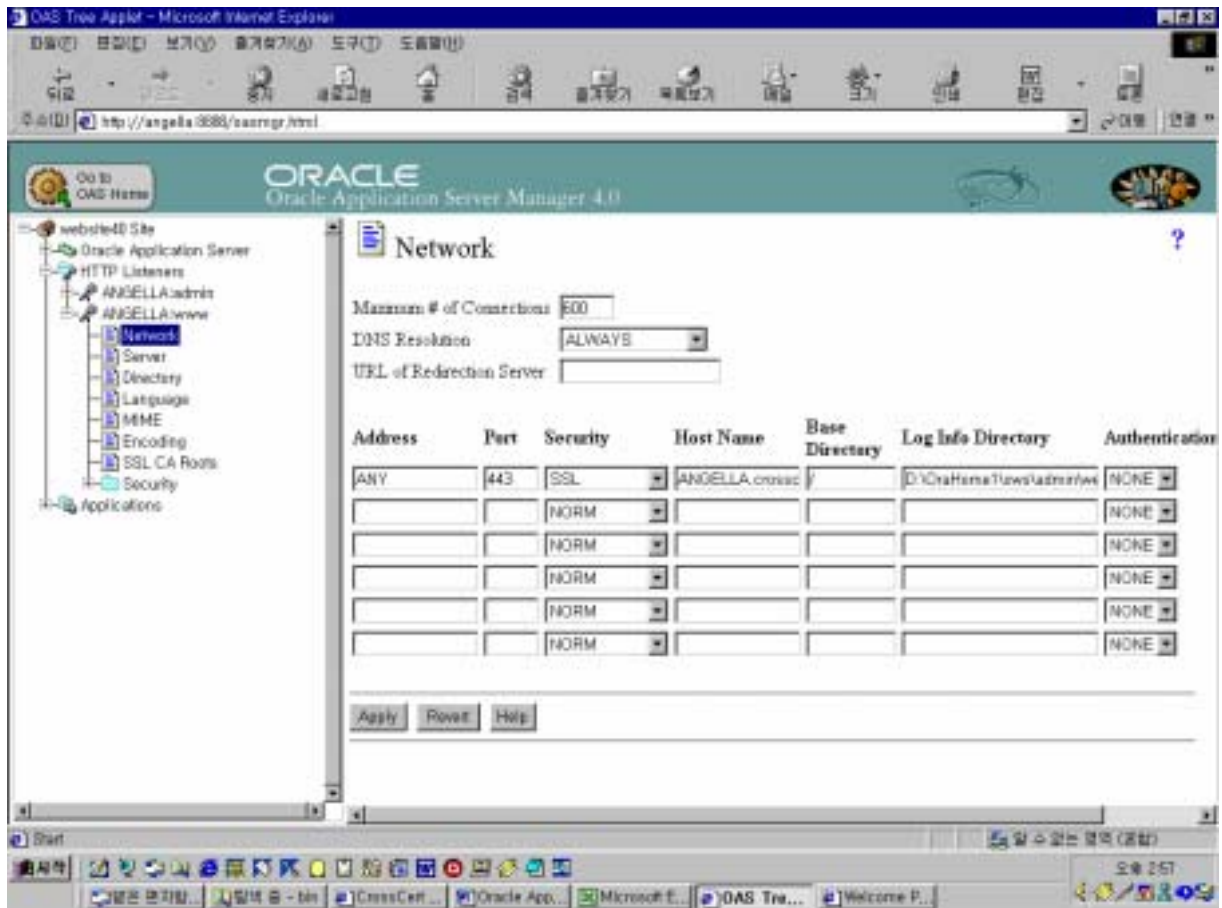
1. (- - - -BEGIN CERTIFICATE END CERTIFICATE
cert.der
2. Admin
3. Website 40 Site -> HTTP Listeners -> www -> Security -> SSL
field
 - Cert Label – oastest
 - Cert File – D: \ OraHome1 \ bin \ cert.der
 - Dist Name File - D: \ OraHome1 \ bin \ servname.der
 - Private Key File – D: \ OraHome1 \ bin \ privkey.der
 - CA Dir - D: \ OraHome1 \ tmp
 - CRL Dir - D: \ OraHome1 \ tmp



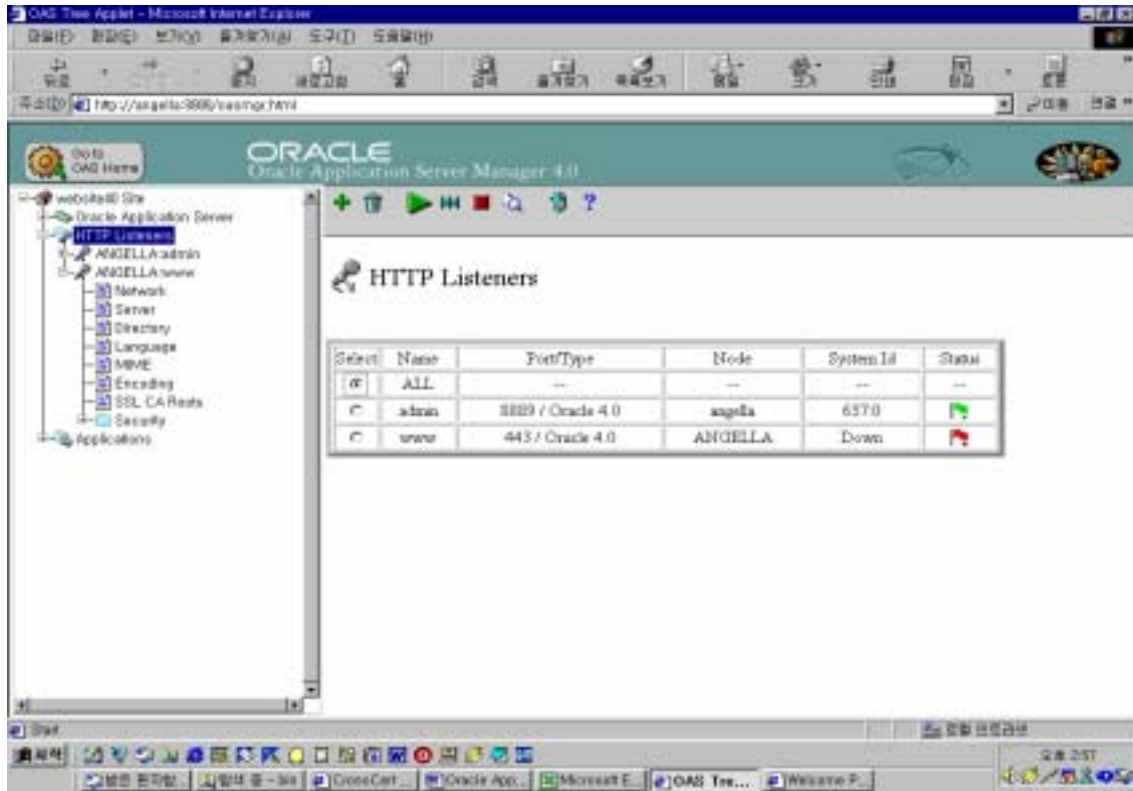
4. HTTP Listeners -> www -> Network

- Address – ANY
- Port – 443 (SSL port)
- Security – SSL
- Host Name – default
- Base Directory – default
- Log Info Directory – default
- Authentication – default (NONE)
- Certificate Label - oastest

* Apply



5. HTTP Listeners -> ALL Start



6. <https://angell.crosscert.com>

