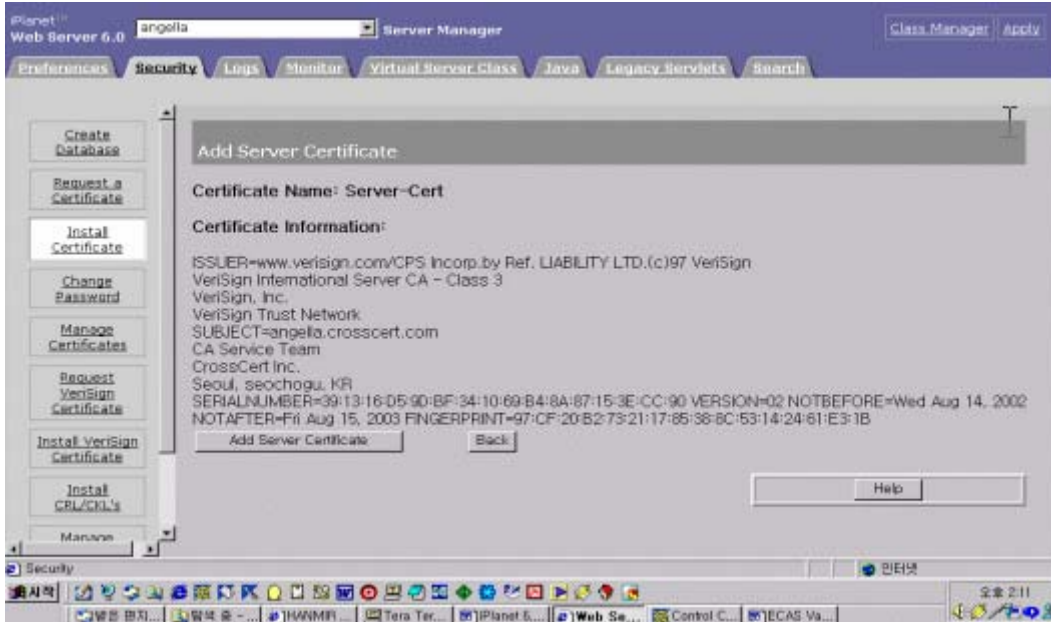
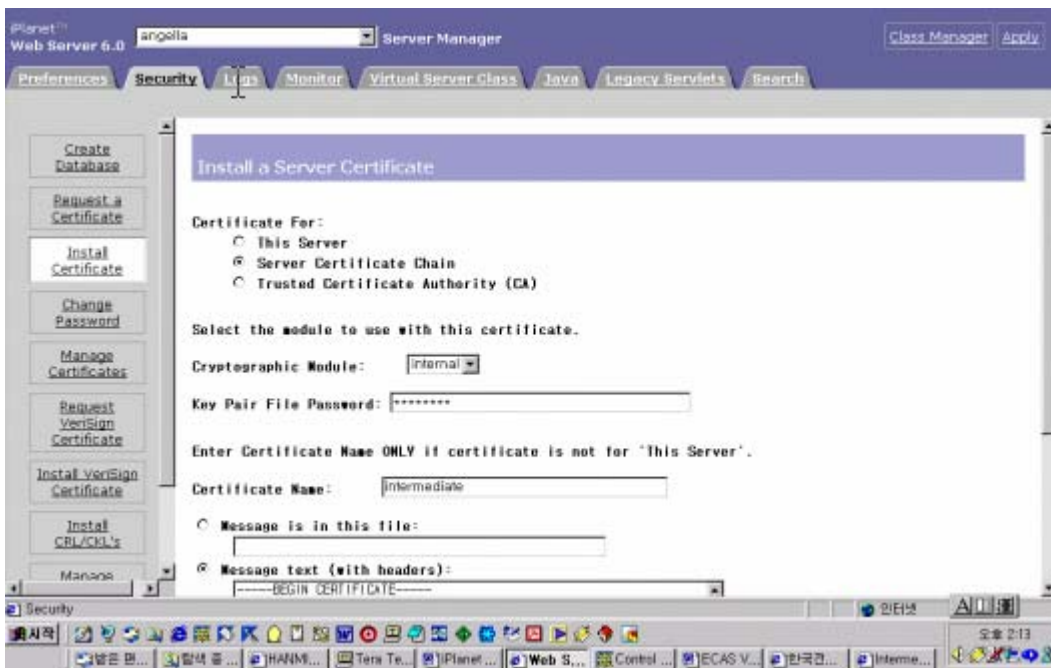


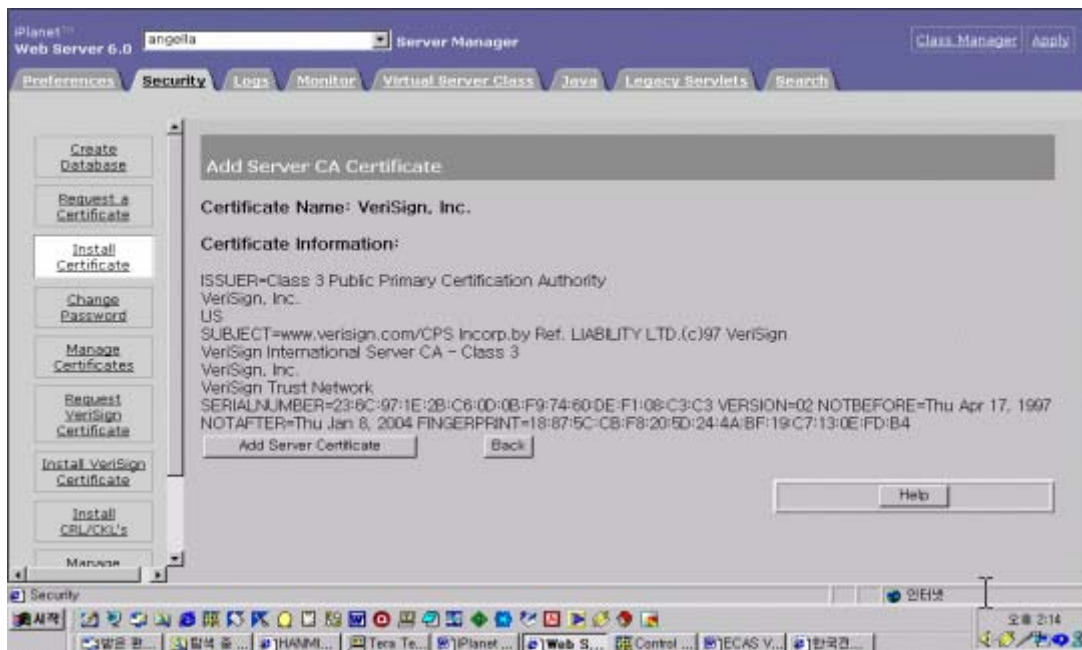
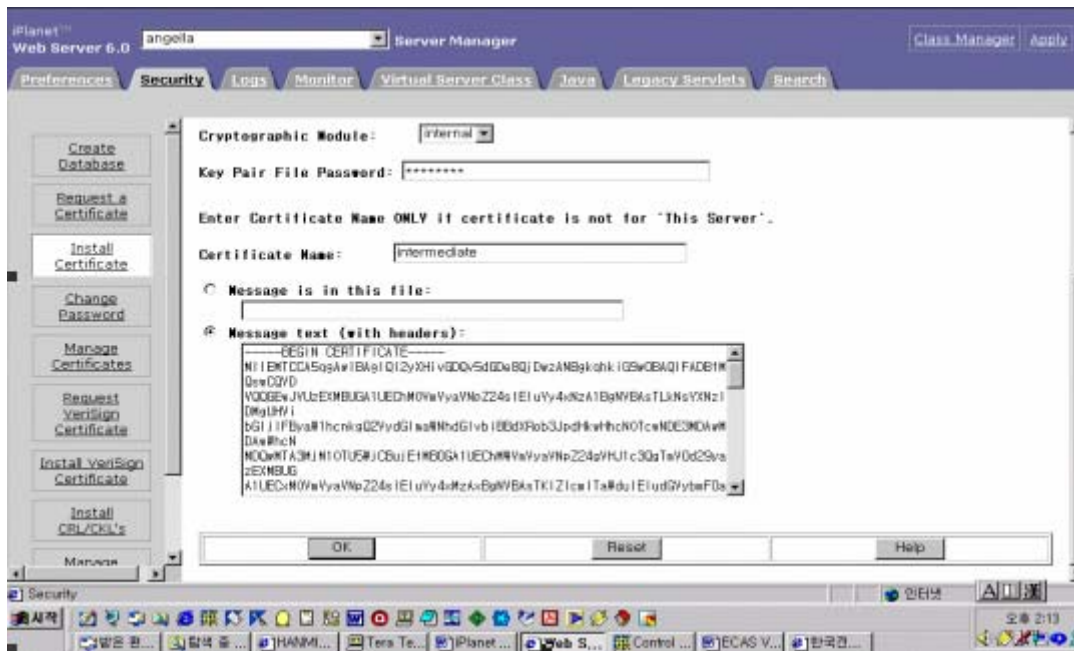
ok Certificate Information
Add Server Certificate



Global Server ID

Get Intermediate CA



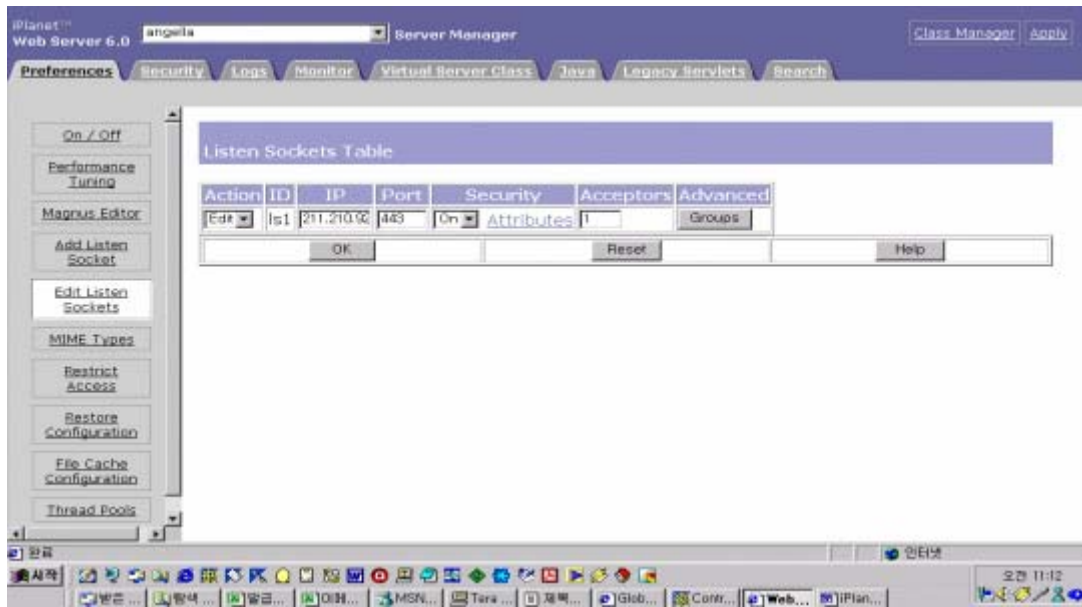


< SSL >

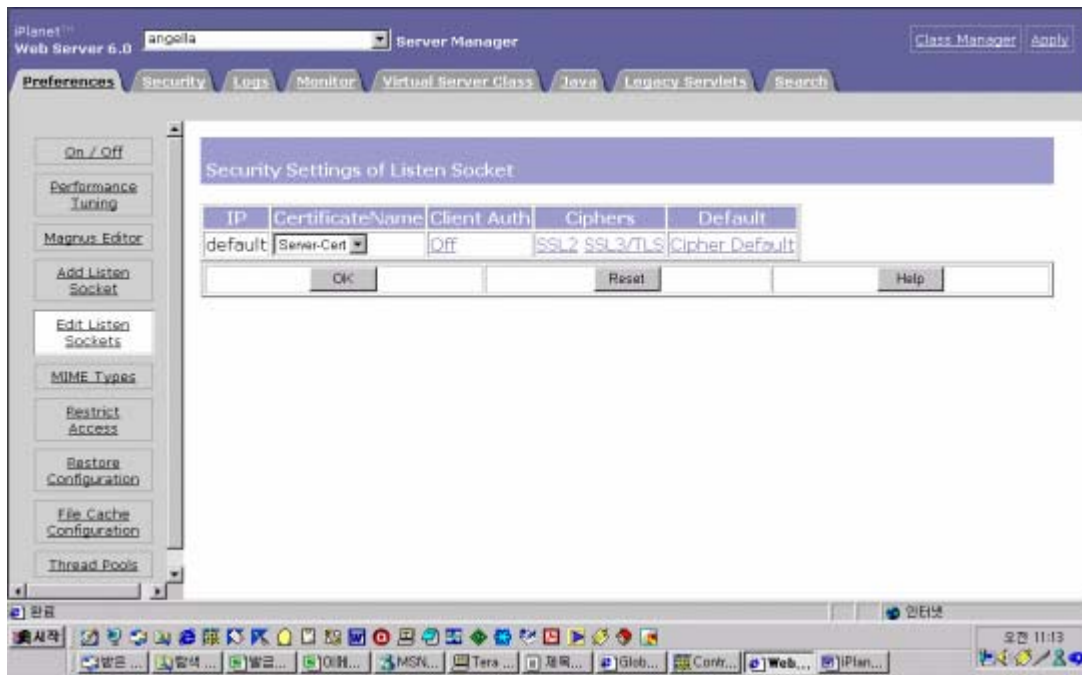
Preference Edit Listen Sockets

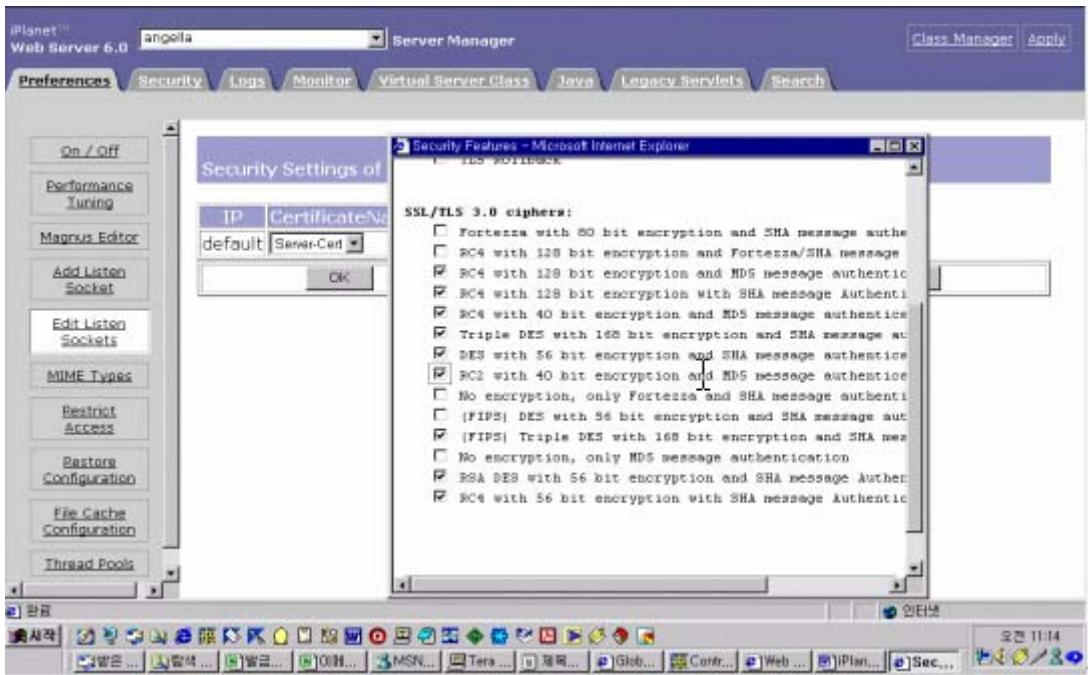
SSL Security on

(SSL 443 .)

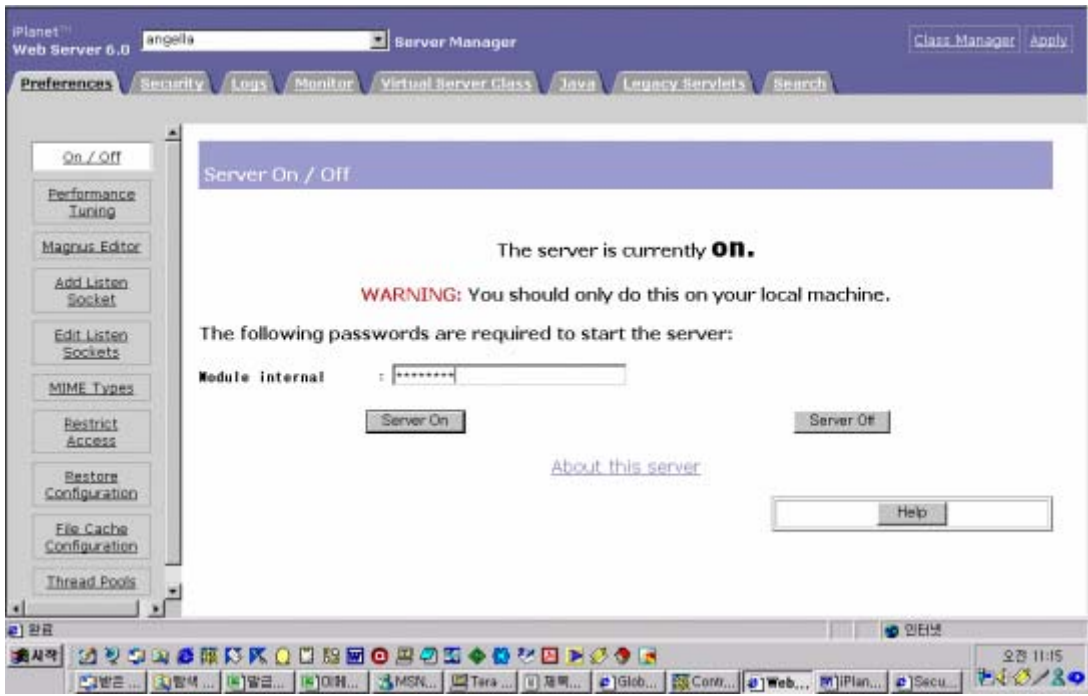


40 bit 56bit SSL 가 SSL3/TLS





Preference on/off start



(<https://host.domain>

<https://angella.crosscert.com>)

