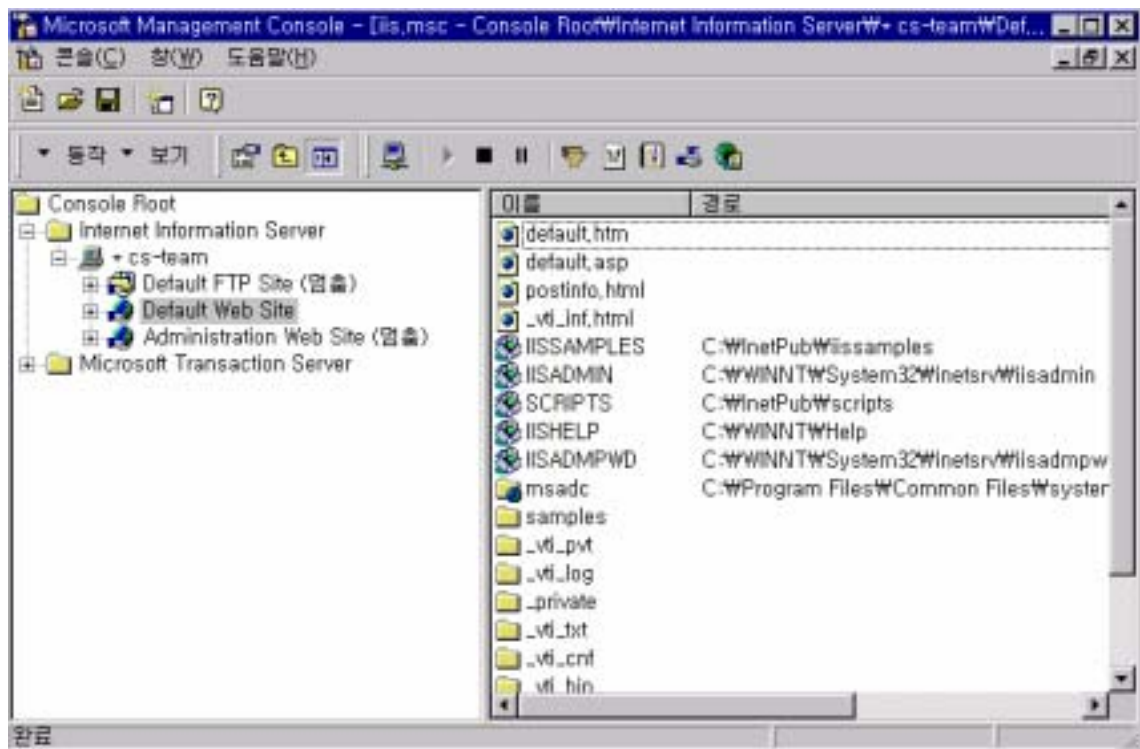


Microsoft IIS 4.0

1.
 - a.
 - b.

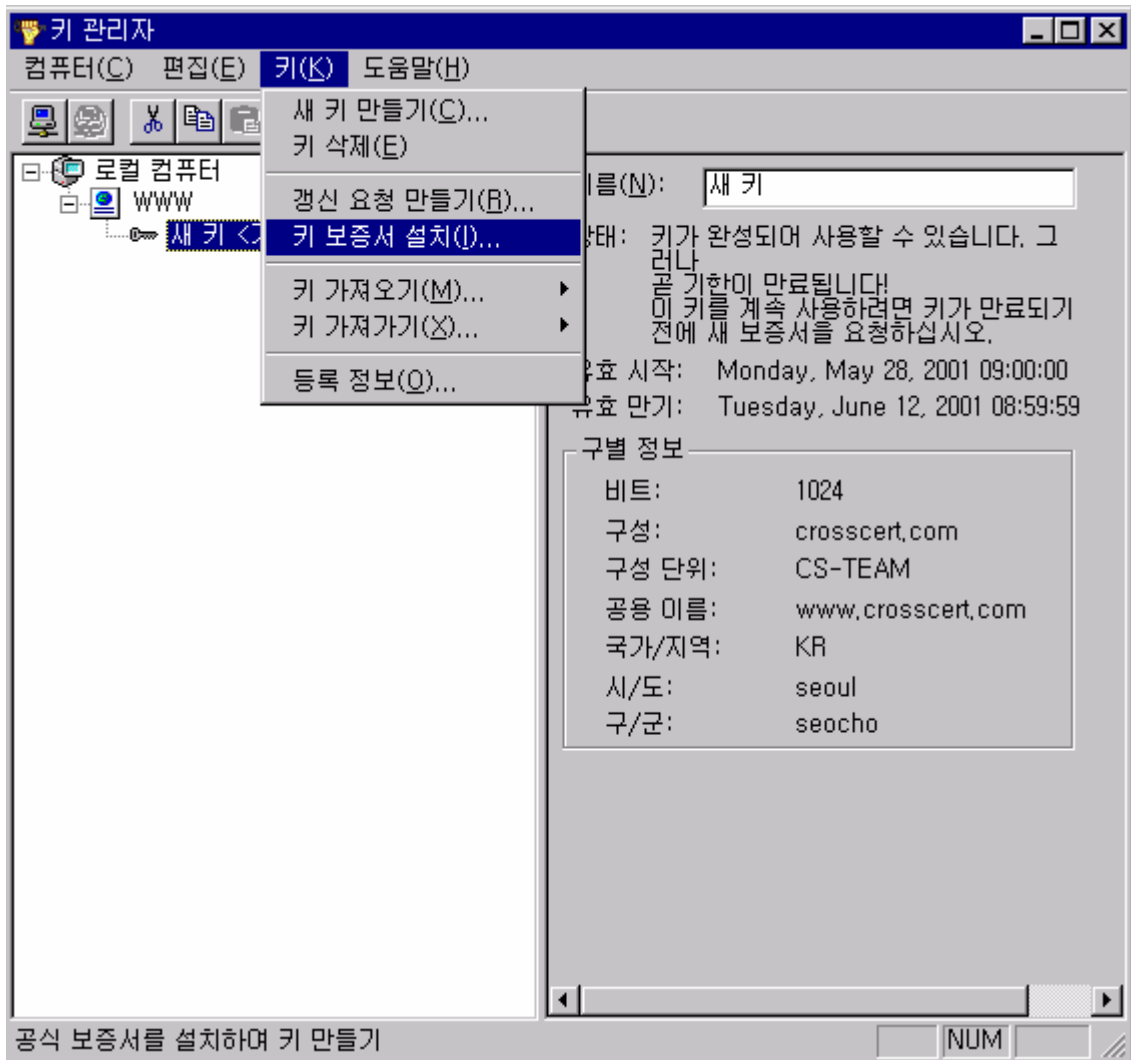
[Step1]



2.

a.

[Step2]



3.

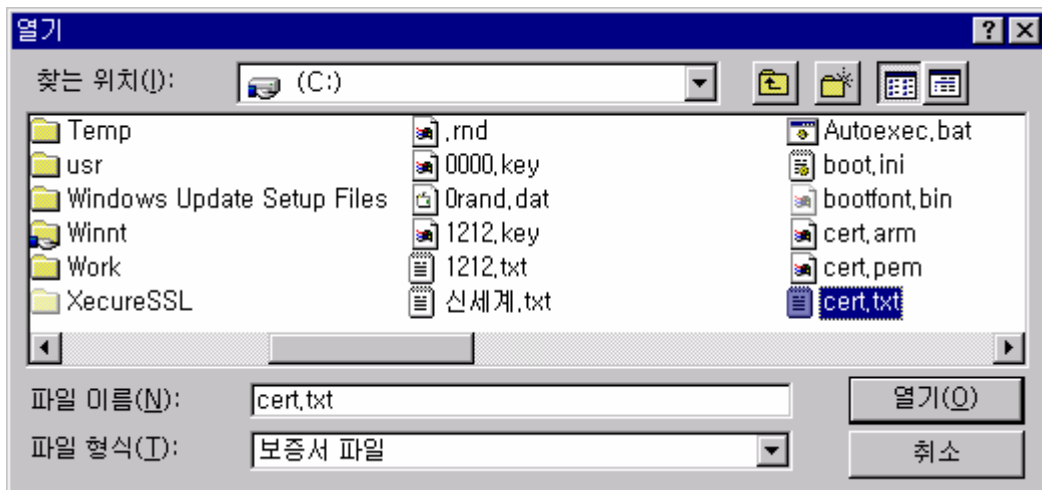
a.

(-----BEGIN.... ... CERTIFICATE REQUEST-----)

b.

c.

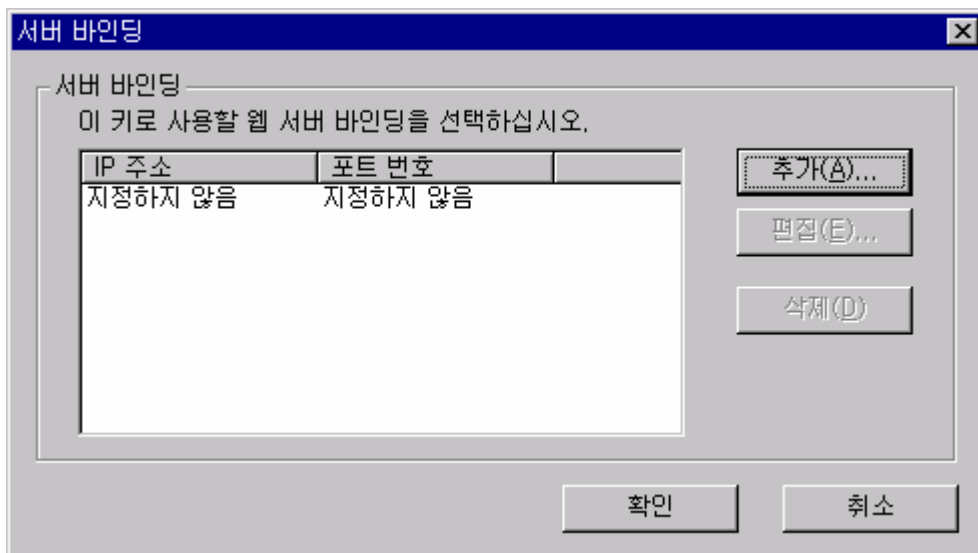
[Step3]



4.

- a. IP
- b. , 가 IP Port
(SSL 443 .)

[Step4]



5. TCP SSL

a.

b.

[step5-b]

c. , 가 .

[step5 - c]

