

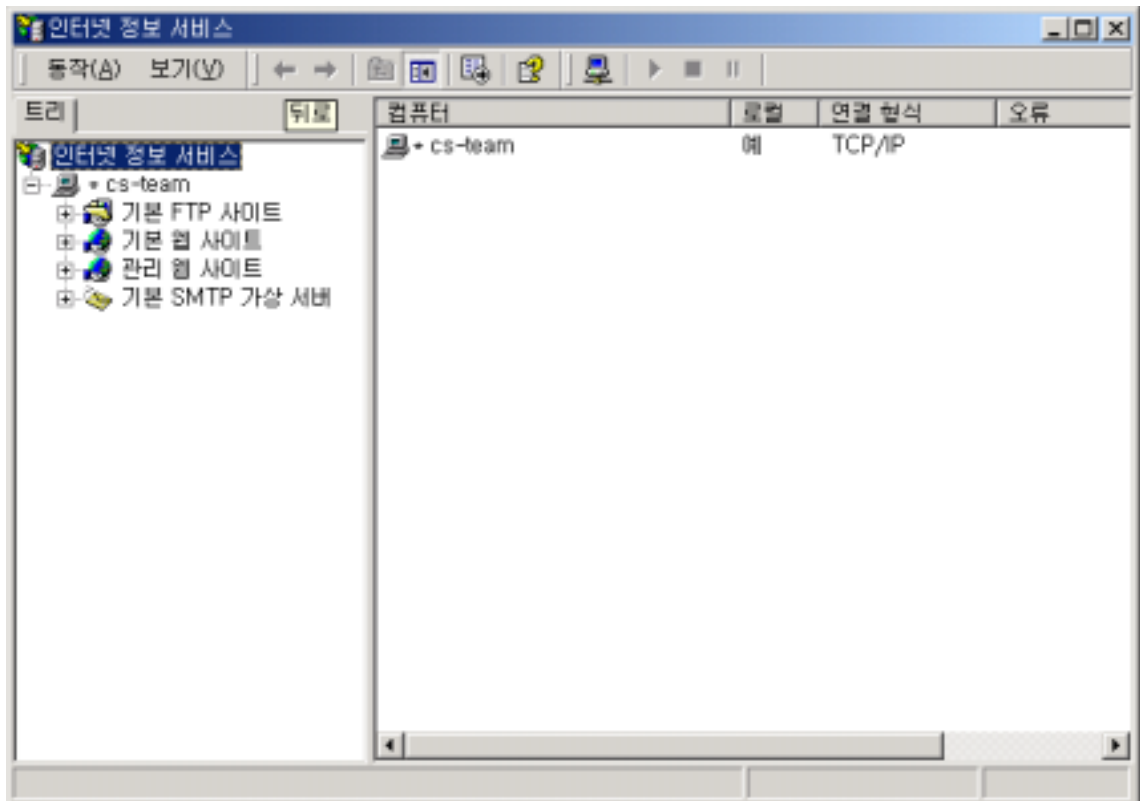
# IIS 5.0

1.

a.

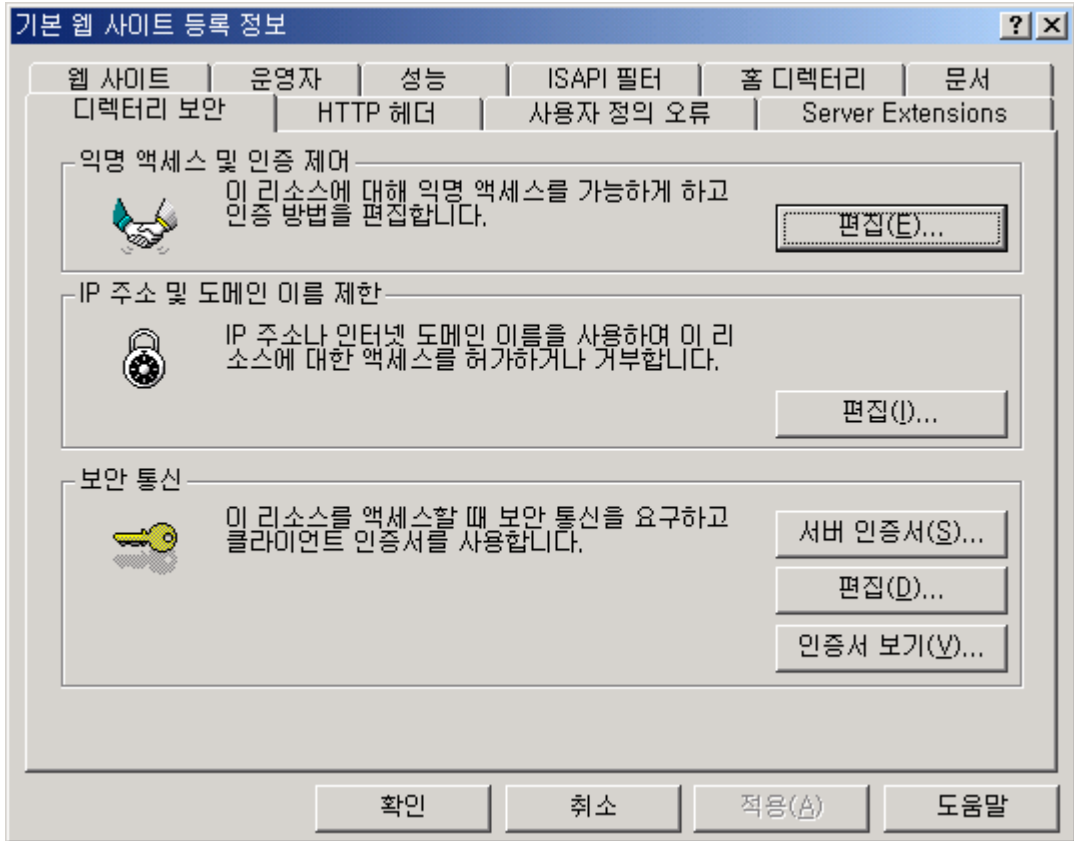
b.

[step1]



2.

a.

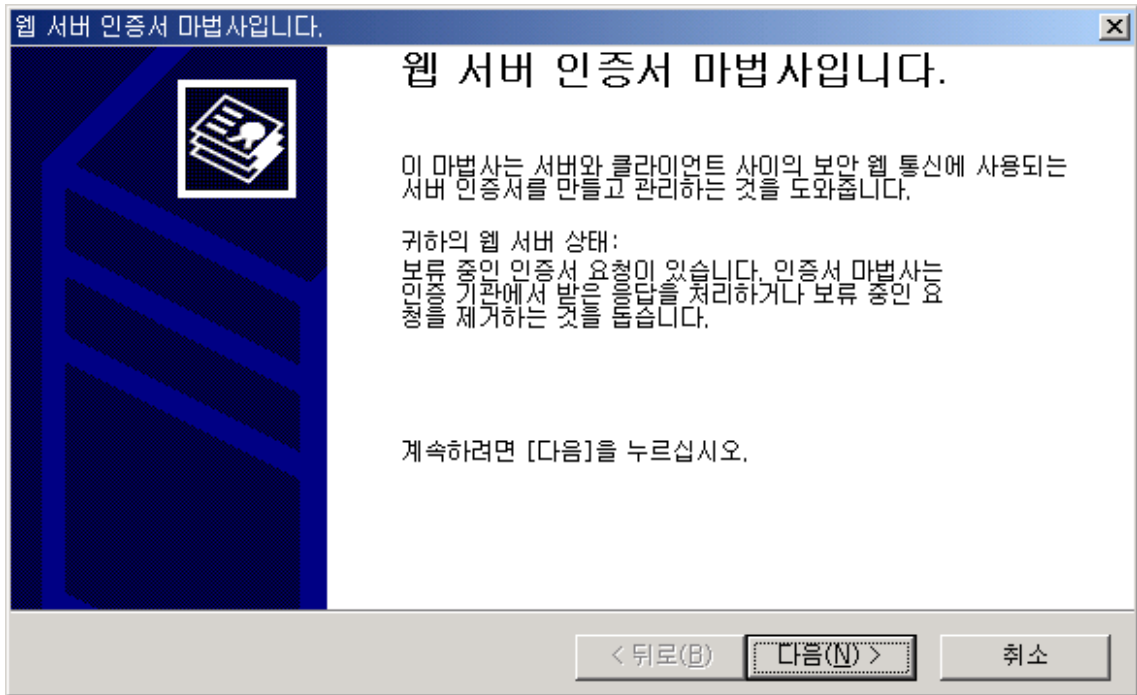


3.

a.

가

[step3]



4.

a.

a-1.

a-2.

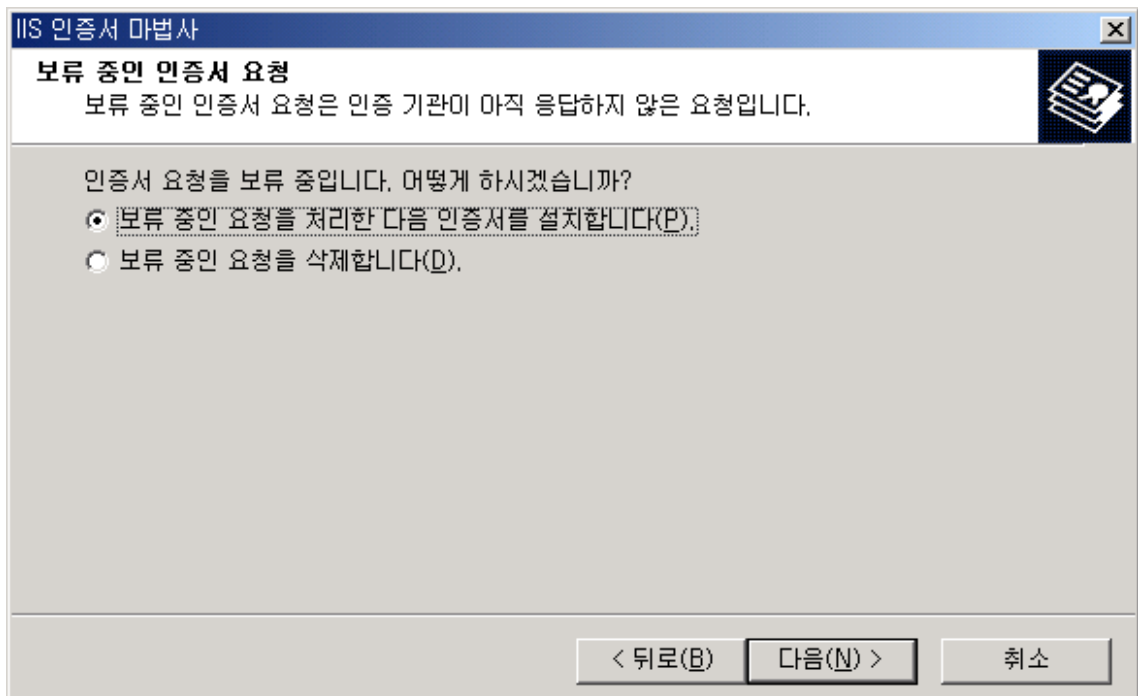
a-3.

b.

b-1.

b-2.

[step4]



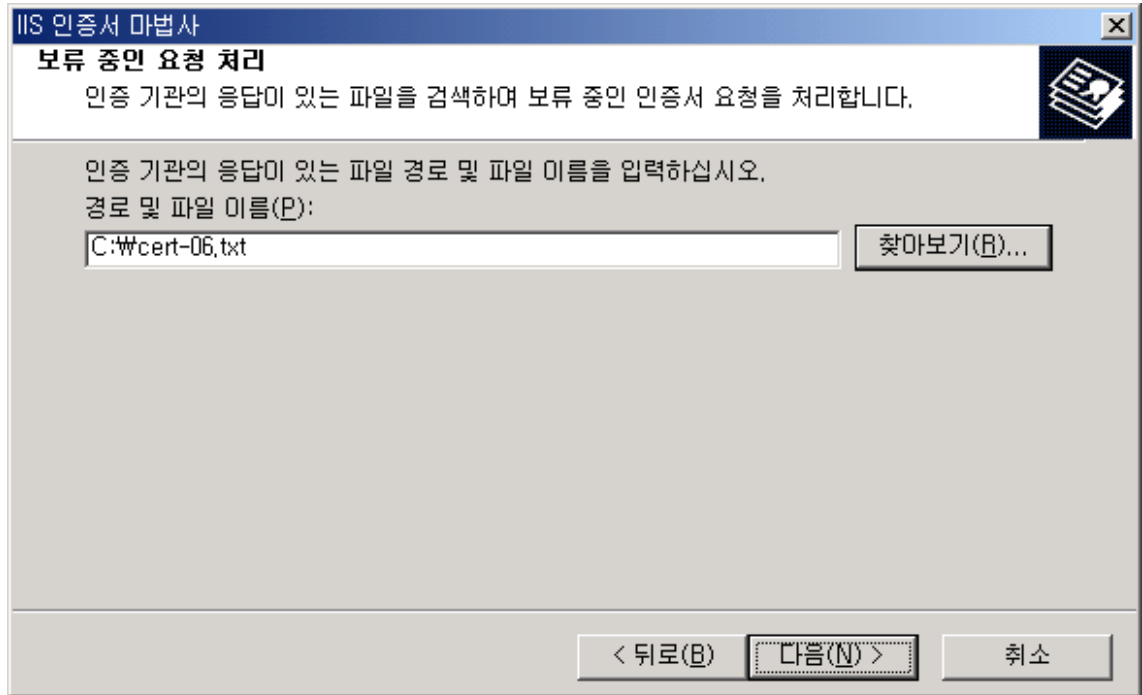
5.

a.

(----- BEGIN.... ..... CERTIFICATE ----- )

b.

[step5]



5.

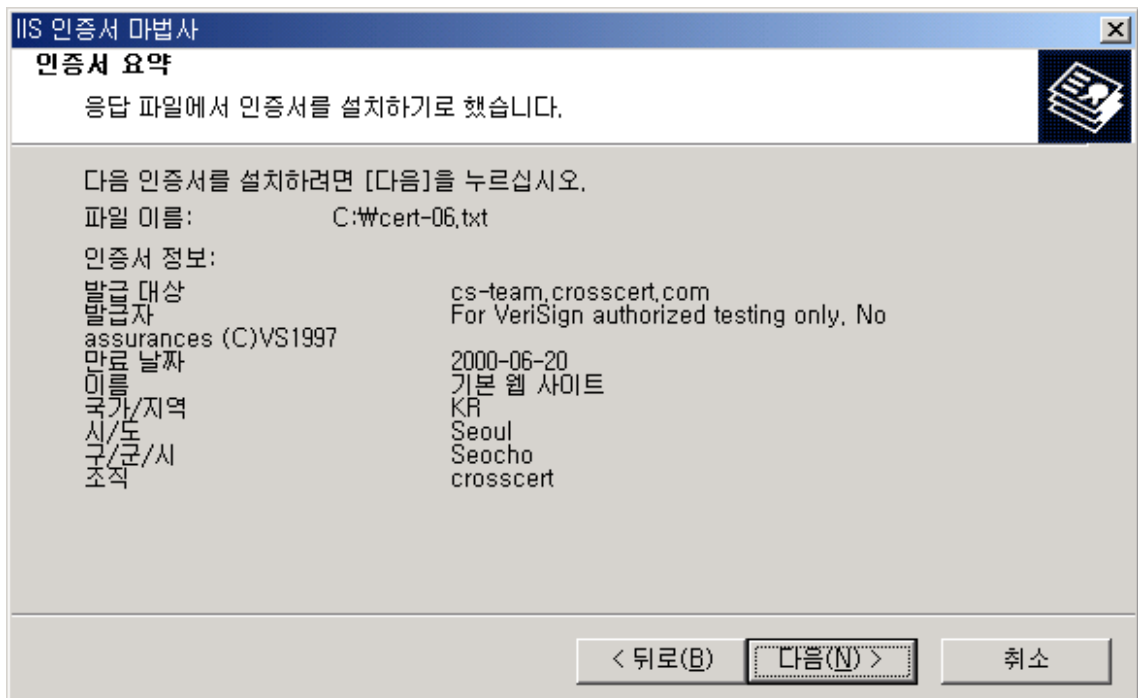
a.

b.

c.

, 가 , 가

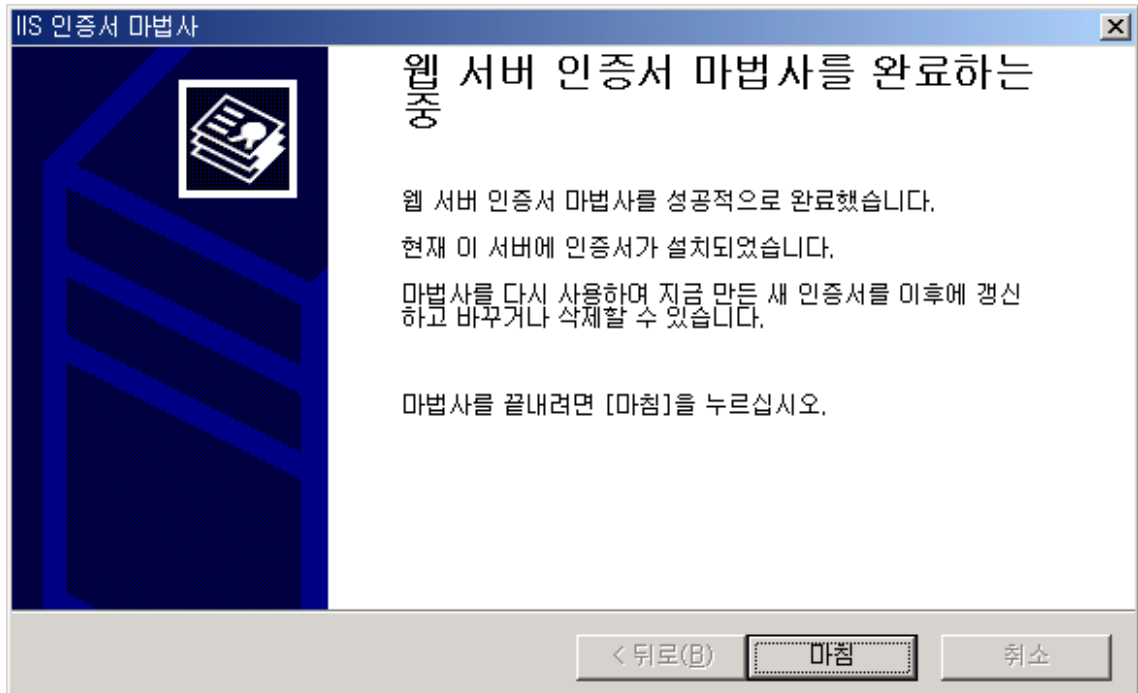
[step5]



6.

a. 가

[step6]



7.

a.

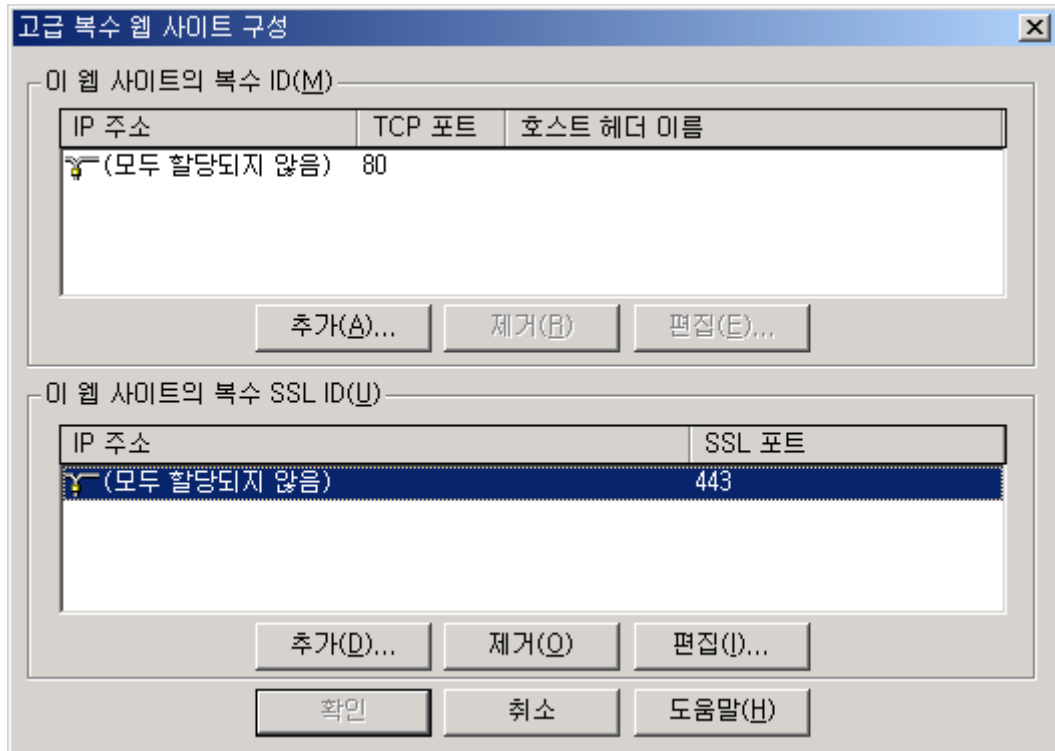
b.

[step7]

1)

- a. ' SSL ID' IP SSL 가
- b. , 가 IP SSL IP
- c. SSL 443
- d.
- e. SSL ) <https://www.crosscert.com>:

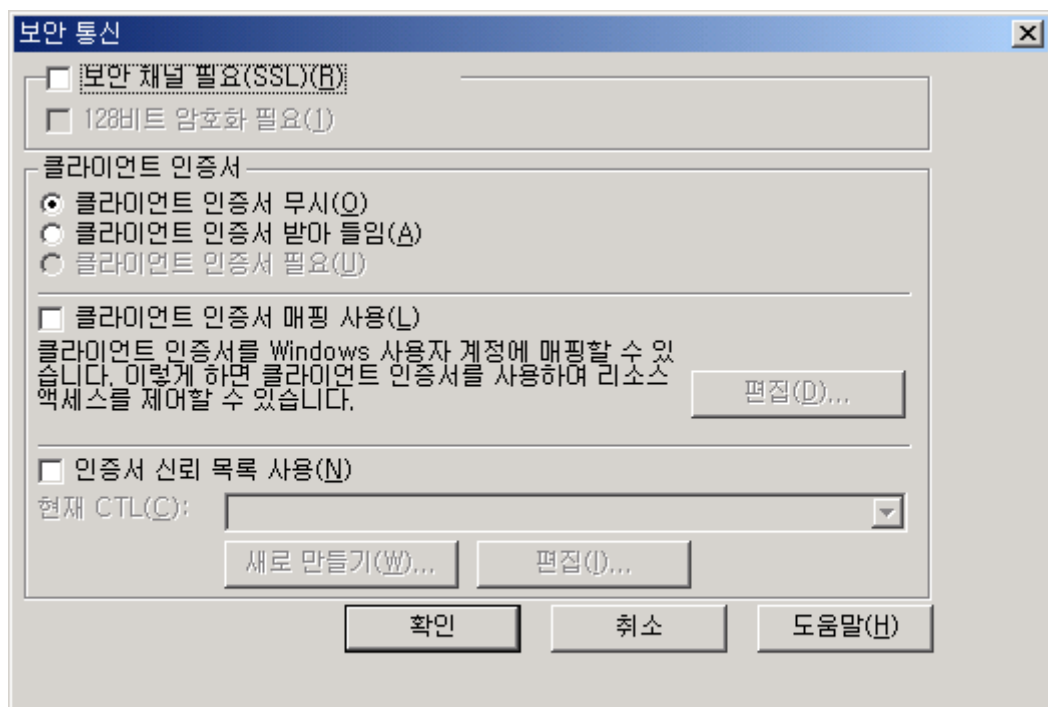
[step7-1]



2)

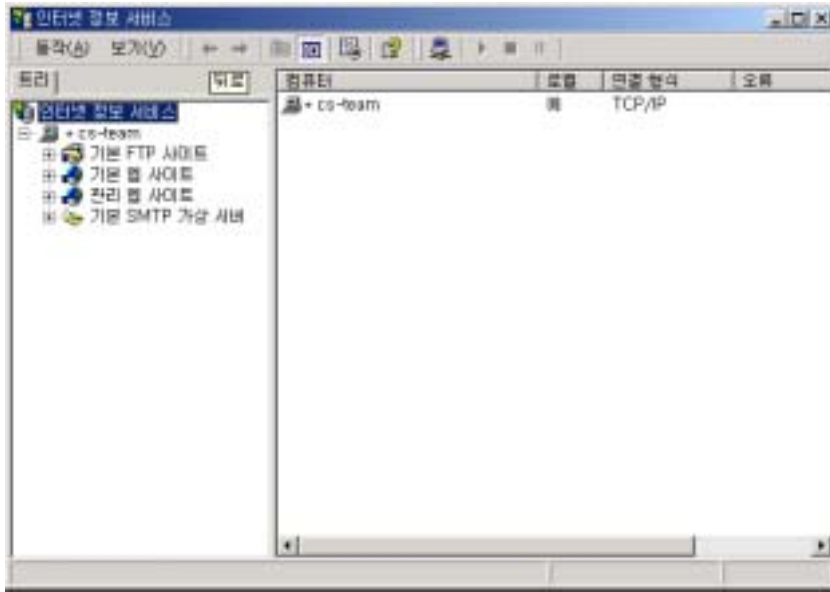
- a. ' , .
- b. , <https://> .
- c. 128 , 128 browser
- d. ' , ,  
가

[step7 - 2]

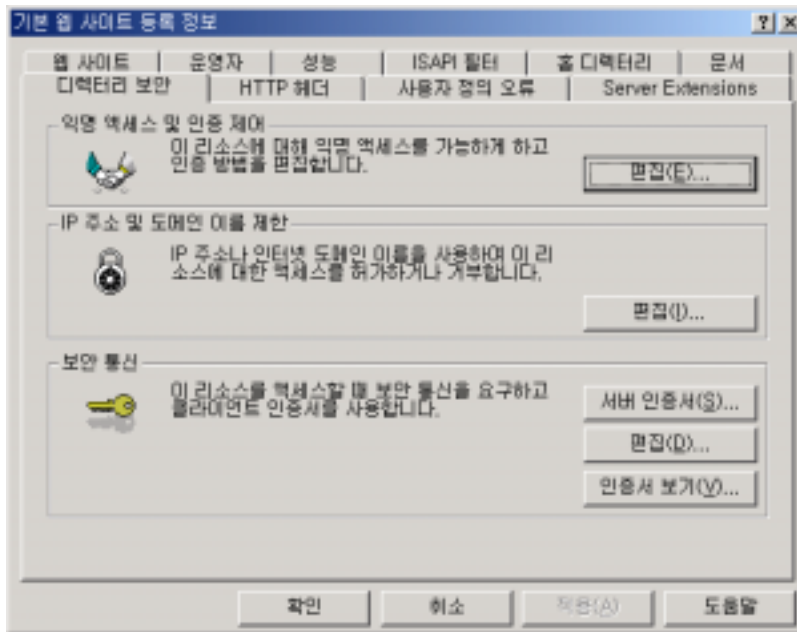


8.

a.

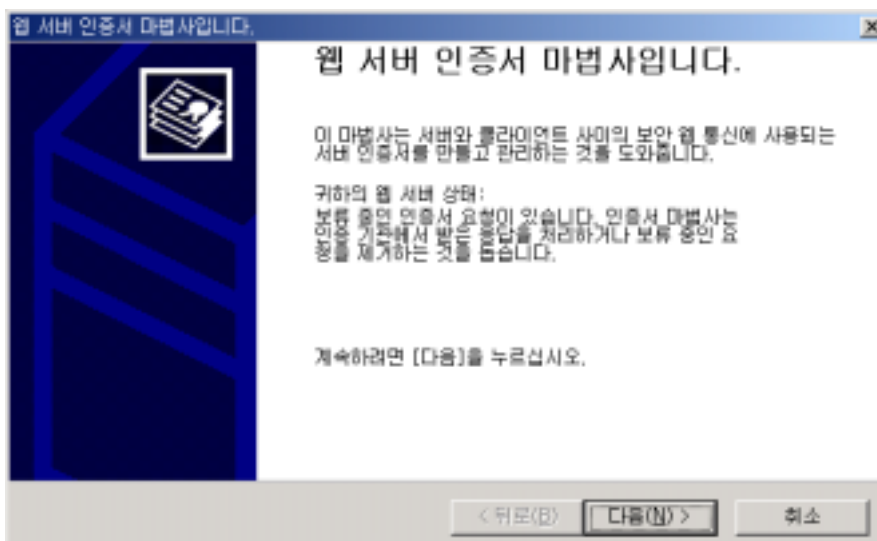


b.

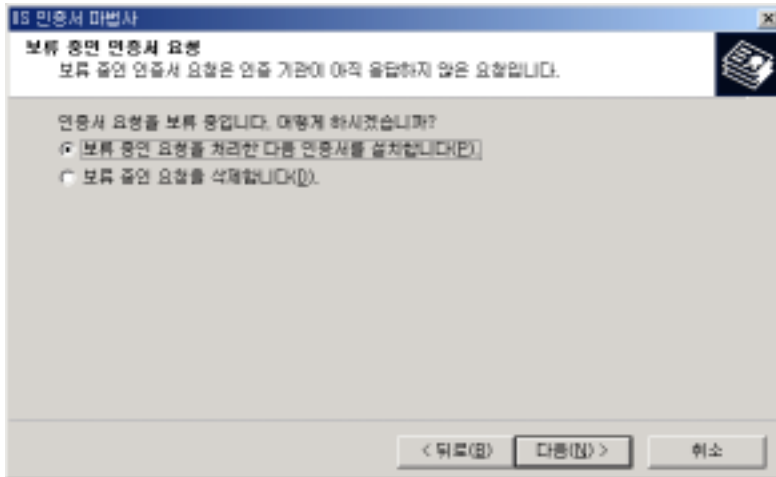


C.

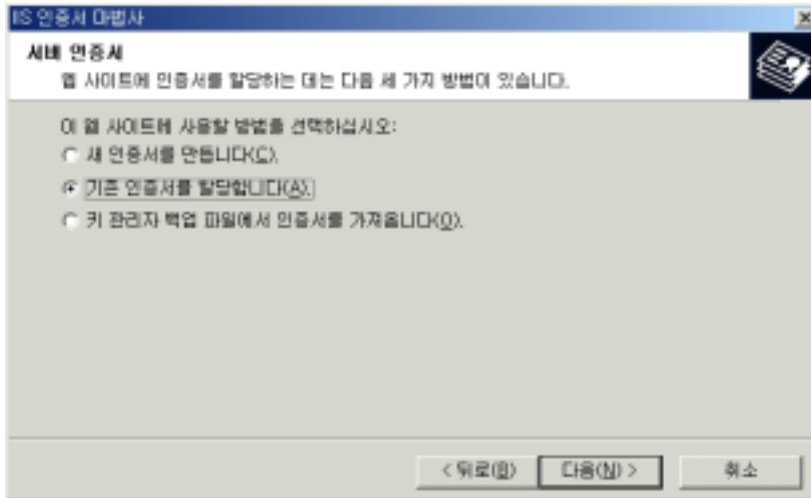
가



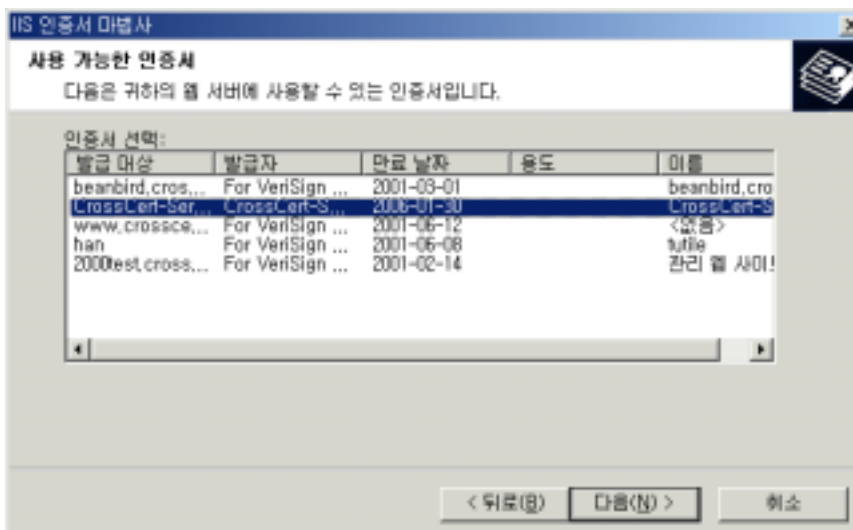
d.



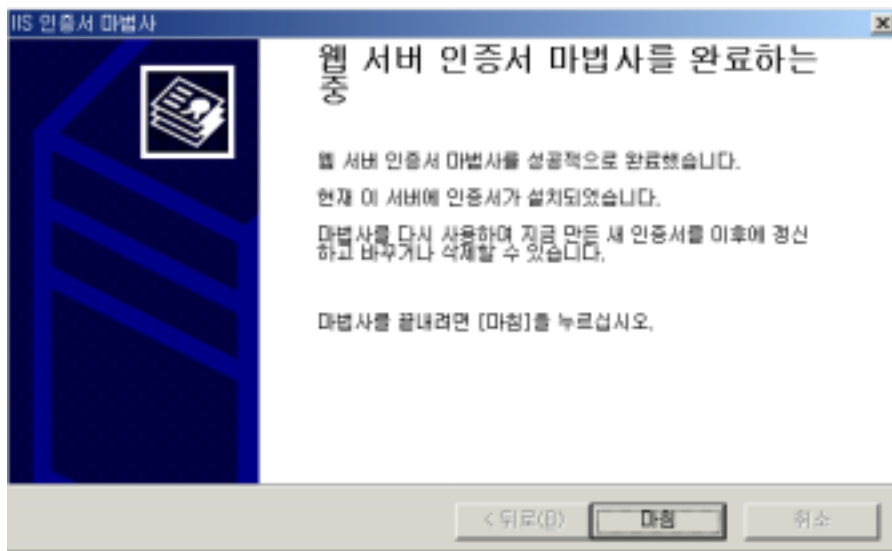
e. 가



f.



g.



h.

