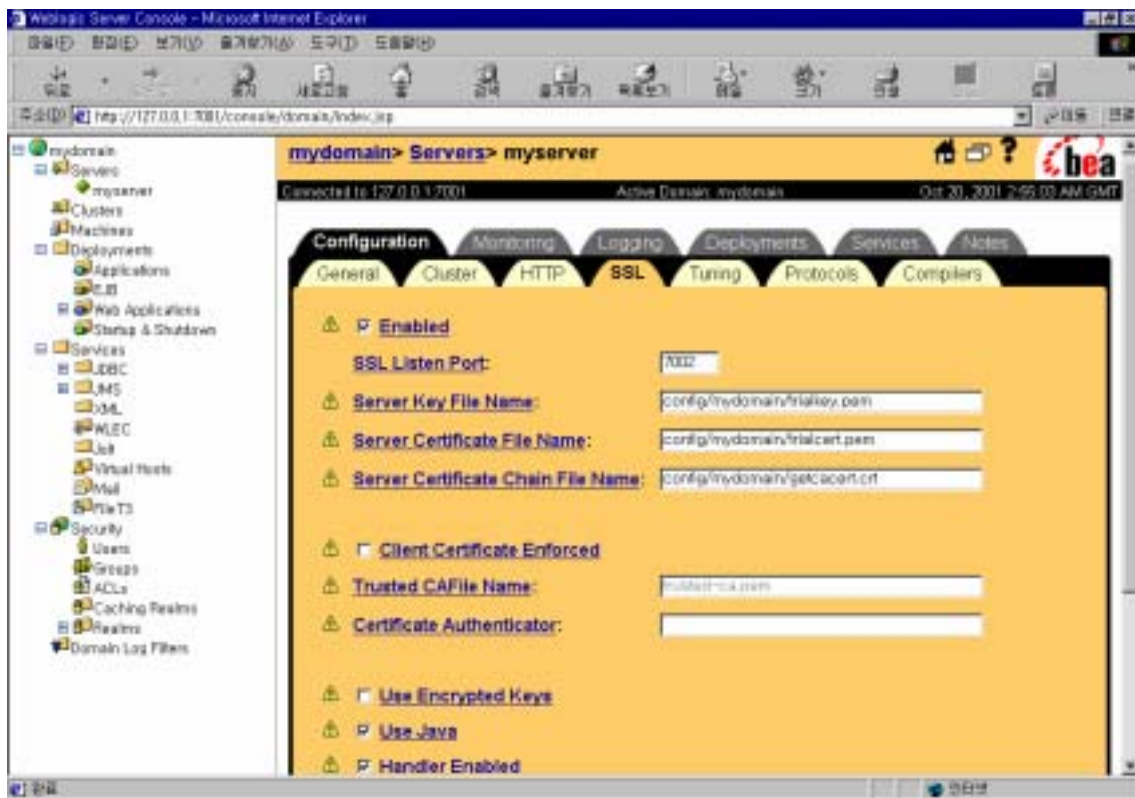


WebLogic Server 6.0

1. (-----BEGIN CERTIFICATE-----
CERTIFICATE-----) Weblogic server (\wlserver6.0 \ config \
mydomain)

- .pem
“trialcert.pem”

2. Administration Console Server Configuration SSL tab
key file, certificate file, certificate chain file
Apply



3. restart <https://hostname:7002>

) <https://angella:7002>

