

WebLogic Server 6.0 CSR

1. Weblogic Server

.. https://hostname:port/Certificate

* hostname Weblogic Server DNS

* port SSL Weblogic Server . (7002)

, Weblogic Server가 “angella”

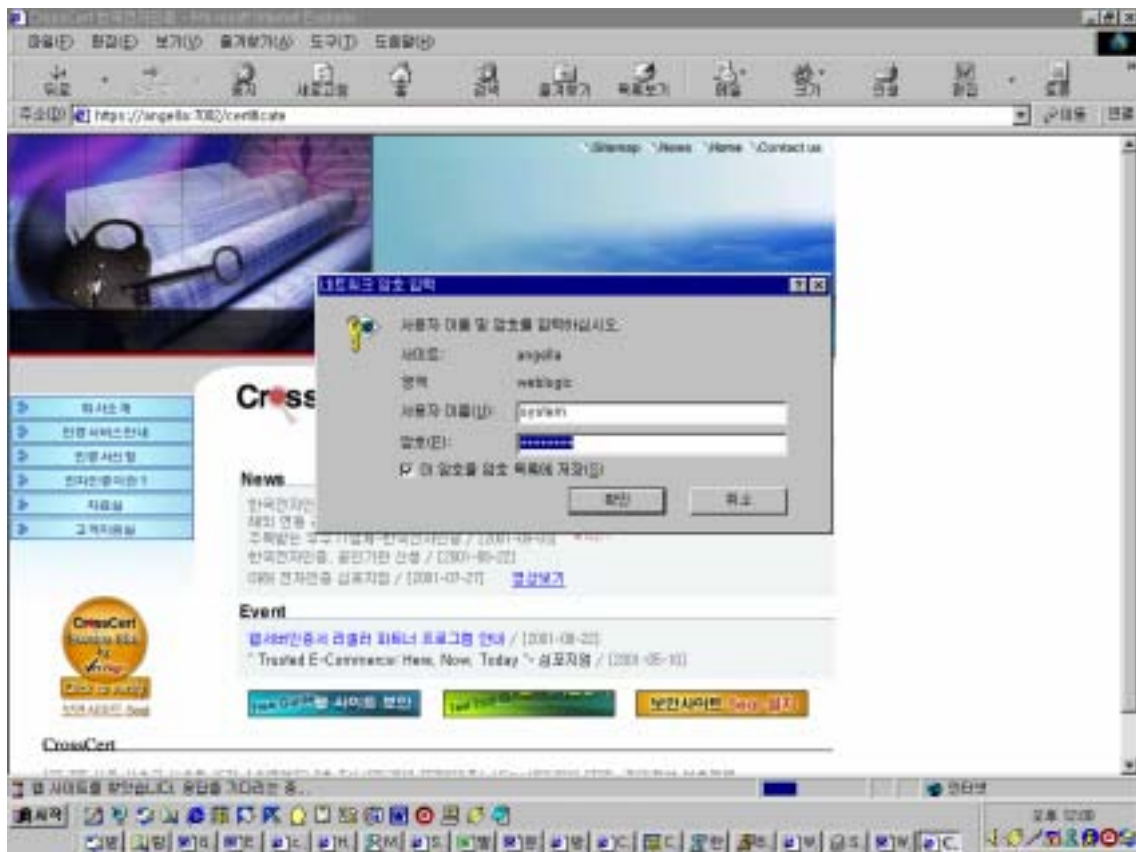
, SSL port 가 7002

URL

https://angella:7002/certificate

2. Weblogic Server ID

System



3.

(Generate Request)

The screenshot shows a web browser window titled "BEA WebLogic Server Certificate Request Generator - Microsoft Internet Explorer". The address bar shows "https://angelis.100/certificate". The main content area contains a form with the following fields and values:

Country code	us Example: US
Organizational unit name	rs Example: Research
Organization name	BECA Inc Example: BigCo, Inc
Email address	johnho@crossart.com Example: me@bigcoinc.com
Full host name	weblogic.crossart.com Example: myhost.bigcoinc.com
Locality name (city)	jeast Example: Northeast Pampasville
State name	jeachogu Example: Florida
Private Key Password	
Random string	<input type="text"/> Example: anylokd?random#sRng%

At the bottom of the form is a "Generate Request" button.

4.

(CSR)

