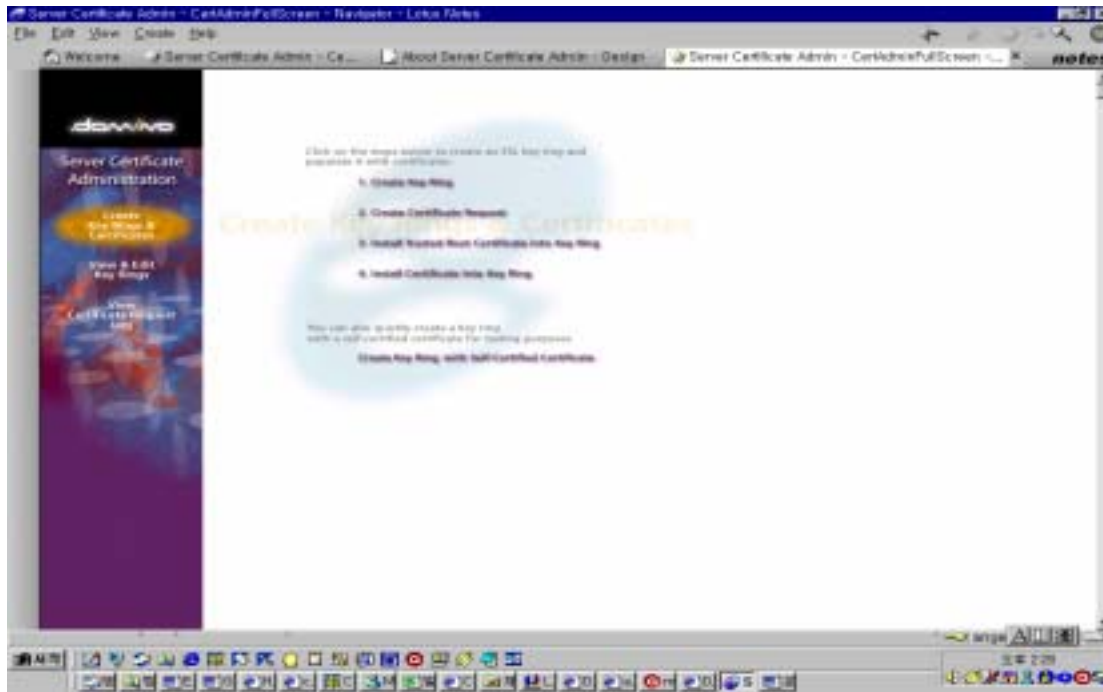
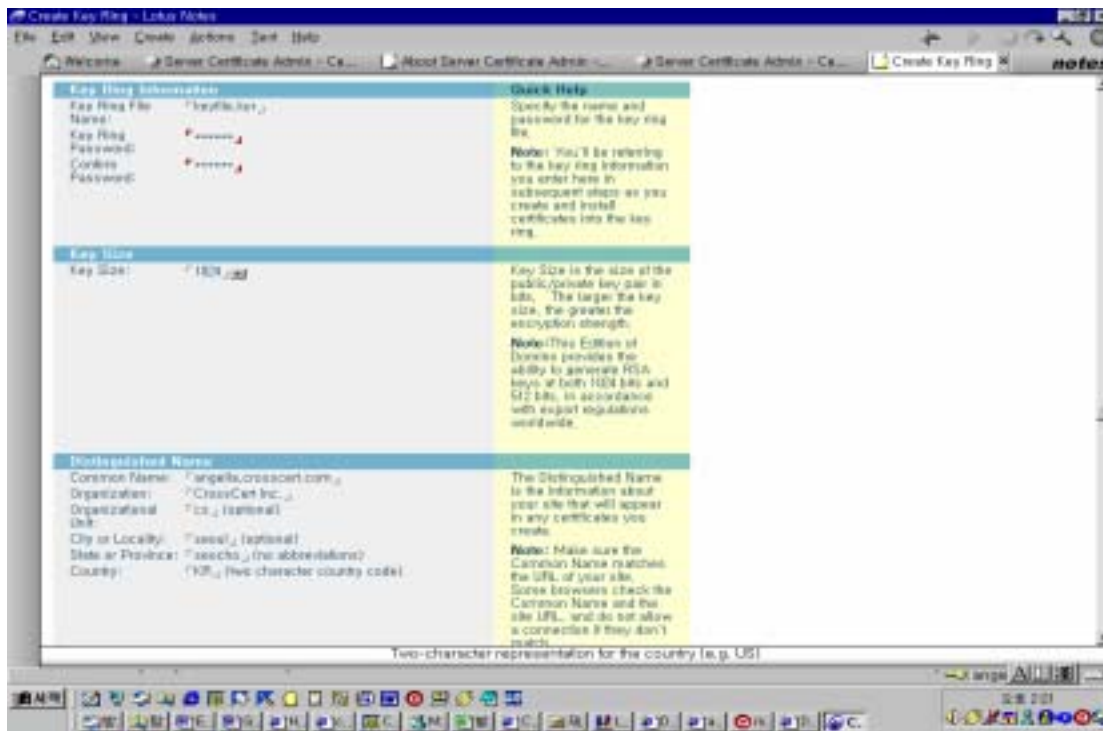


Lotus Domino Server R5 CSR

1. Server Certificate Administration database(certsrv.nsf)
2. file tab database open Server certificate admin
3. Create Key Ring



4. Key file, key password, size server Distinguished Name



5. Create Server Certificate Request

```

-----BEGIN CERTIFICATE REQUEST-----
                                4      CSR
-----END CERTIFICATE REQUEST-----

```

